



11, Cavendish Close, Redwood Park, Shrewsbury, SY3 5PG
£1,800 Per Month



11, Cavendish Close, Redwood Park, Shrewsbury, SY3 5PG

£1,800 Per Month

VIRTUAL TOUR AVAILABLE: Substantial modern five bedroom detached house with integral double garage in a sought after residential location to the west of Shrewsbury town centre. The property has been redecorated and benefits from new carpets throughout.

Available: 17/05/25

Description

Comprising: Entrance hall, cloakroom, good sized kitchen including appliances, utility, sitting room, living room, conservatory. Stairs to first floor landing including airing cupboard, master bedroom including modern ensuite shower room, guest bedroom including ensuite shower room, three further good sized bedrooms, new family bathroom including shower. Gas central heating, double glazing, front and rear garden. Integrated double garage, driveway parking for multiple cars. EPC C



Unfurnished

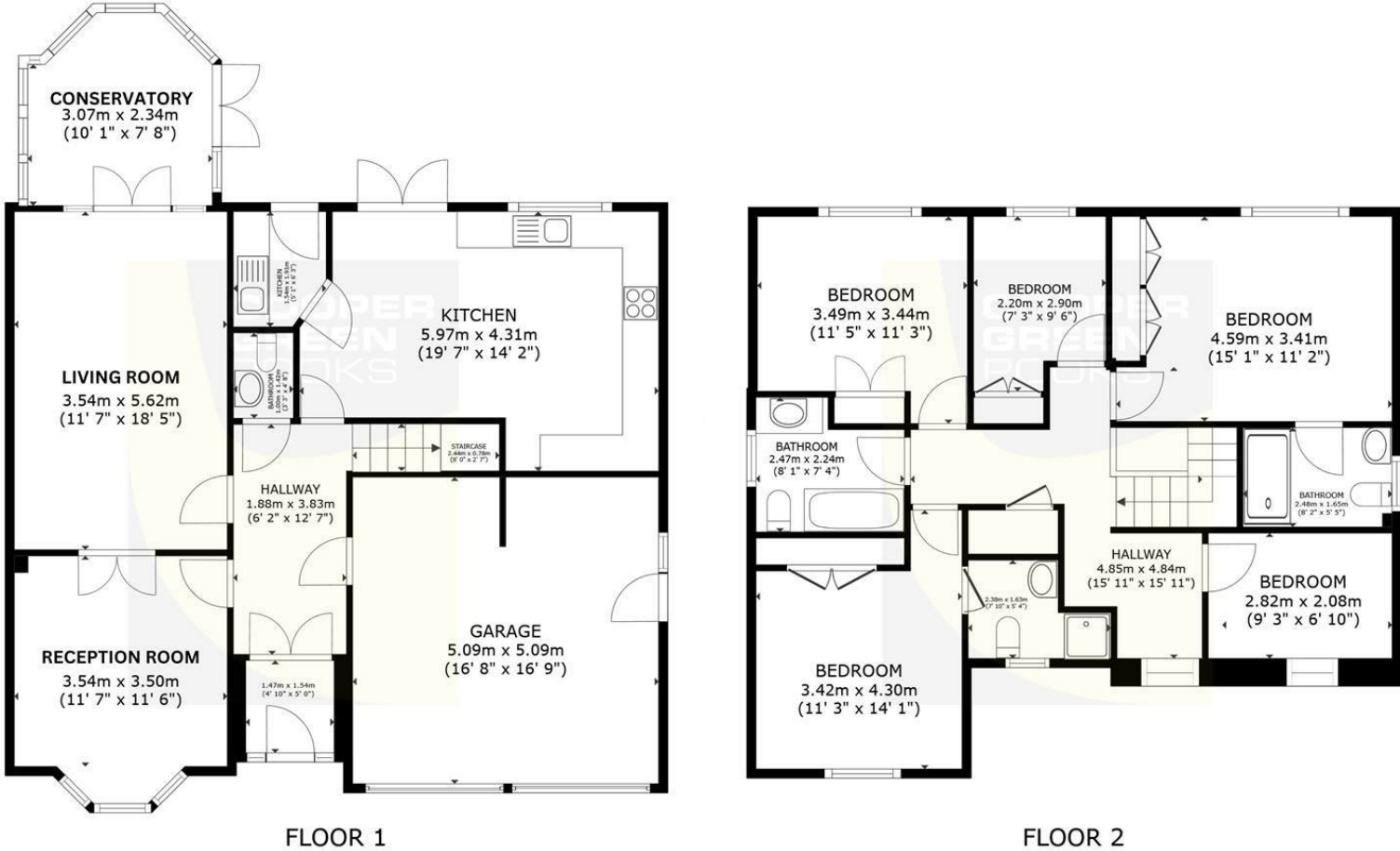
Council Tax Band: F

Available: 17th May 2025

EPC: C



Floor Plans



GROSS INTERNAL AREA
FLOOR 1 76.7 m² (825 sq.ft.) FLOOR 2 83.8 m² (902 sq.ft.)
EXCLUDED AREAS : GARAGE 25.9 m² (279 sq.ft.) HALLWAY 7.2 m² (77 sq.ft.)
TOTAL : 160.5 m² (1,728 sq.ft.)
SIZES AND DIMENSIONS ARE APPROXIMATE, ACTUAL MAY VARY.

These particulars, whilst believed to be accurate are set out as a general outline only for guidance and do not constitute any part of an offer or contract. Intending purchasers should not rely on them as statements of representation of fact, but must satisfy themselves by inspection or otherwise as to their accuracy. No person in this firms employment has the authority to make or give any representation or warranty in respect of the property.